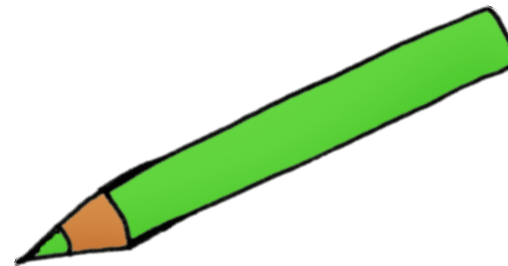


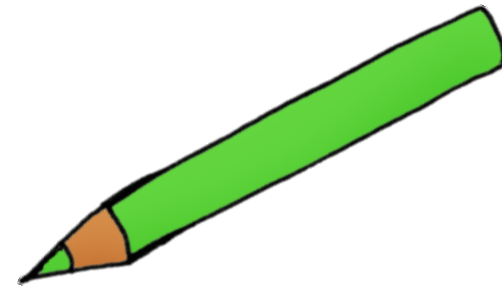
Klasse 1a

Std.	Uhrzeit	Montag	Dienstag	Mittwoch	Donnerstag	Freitag
1.	7.45 - 8.30	Su	Fa	Ma	Eth/Reli	Au
2.	8.30 - 9.15	Ma	Su	Fa	Ku	Ma
3.	9.45 - 10.30	Mu	D	D	Spo	Ma
4.	10.30 - 11.15	D	D	Ma	Spo	Spo
5.	11.25 - 12.10	D	D	We	D	
6.	12.15 - 13.00					



Klasse 1b

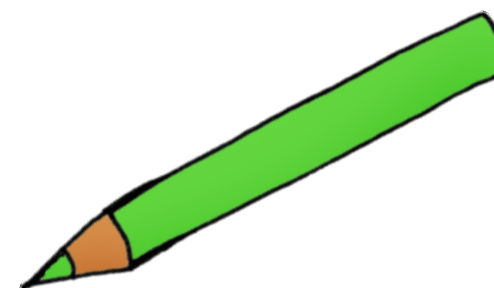
Std.	Uhrzeit	Montag	Dienstag	Mittwoch	Donnerstag	Freitag
1.	7.45 - 8.30	D	D	D	Reli/Eth	D
2.	8.30 - 9.15	D	Ma	Ma	We	Ma
3.	9.45 - 10.30	Ma	Fa	Ku	D	Su
4.	10.30 - 11.15	Fa	Mu	Fa	Ma	Su
5.	11.25 - 12.10	Spo	D	Sp		
6.	12.15 - 13.00			Sp		



Klasse 2a

Std.	Uhrzeit	Montag	Dienstag	Mittwoch	Donnerstag	Freitag
------	---------	--------	----------	----------	------------	---------

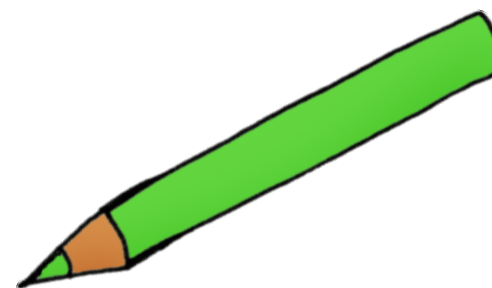
1.	7.45 - 8.30	Ku	D	Mu	D	D
2.	8.30 - 9.15	Eth./Fa	Ma	D	Ma	D
3.	9.45 - 10.30	D	Sp	Ma	SW/Fa	Ma
4.	10.30 - 11.15	Ma	Sp	PC	SW/Fa	Fa
5.	11.25 - 12.10		Su	We	Fa	Su
6.	12.15 - 13.00		Su		Reli	



Klasse 2b

Std.	Uhrzeit	Montag	Dienstag	Mittwoch	Donnerstag	Freitag
------	---------	--------	----------	----------	------------	---------

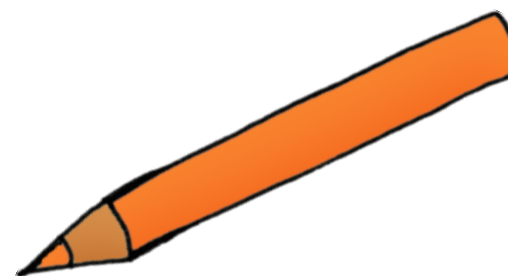
1.	7.45 - 8.30	Ma	D	D	D	We
2.	8.30 - 9.15	Ma	Ma	D	D	Ku
3.	9.45 - 10.30	D	Sp	Mu	Sw/Fa	Pc
4.	10.30 - 11.15	Su	Sp	Ma	Sw/Fa	Su
5.	11.25 - 12.10	We		Ma	Fa	SU
6.	12.15 - 13.00				Reli/Eth	



Klasse 2c

Std.	Uhrzeit	Montag	Dienstag	Mittwoch	Donnerstag	Freitag
------	---------	--------	----------	----------	------------	---------

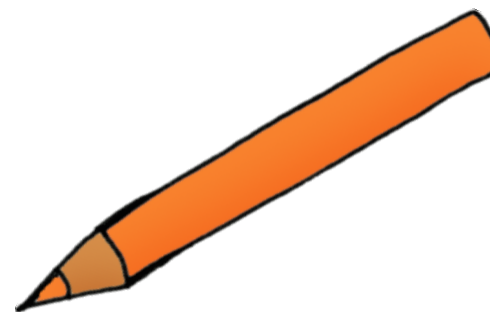
1.	7.45 - 8.30	D	D	Ma	D	D
2.	8.30 - 9.15	Ma	D	Ma	Sw/We	Su
3.	9.45 - 10.30	Sp	Su	Pc	Sw/We	Ma
4.	10.30 - 11.15	Sp	Ma	Mu	Fa	Ku
5.	11.25 - 12.10		Fa	Su	D	
6.	12.15 - 13.00				Reli/Eth	



Klasse 3a

Std.	Uhrzeit	Montag	Dienstag	Mittwoch	Donnerstag	Freitag
------	---------	--------	----------	----------	------------	---------

1.	7.45 - 8.30	D	D	Sp	PC	Sp
2.	8.30 - 9.15	D	D	D	Reli/Fa	Sp
3.	9.45 - 10.30	Ma	We	Fa	En	D
4.	10.30 - 11.15	Su	Fa	Ma	Ma	Fa
5.	11.25 - 12.10	Eth/Fa	Ma	Su	D	Ma
6.	12.15 - 13.00	Ku	Mu	En		



Klasse 3b

Std.	Uhrzeit	Montag	Dienstag	Mittwoch	Donnerstag	Freitag
------	---------	--------	----------	----------	------------	---------

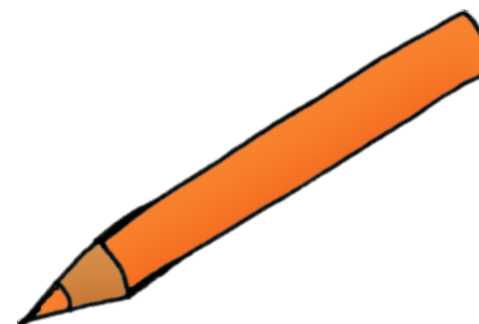
1.	7.45 - 8.30	D	-	D	Ma	D
2.	8.30 - 9.15	D	Fa	D	Fa/Reli	Mu
3.	9.45 - 10.30	PC	Ma	Sp	D	Fa
4.	10.30 - 11.15	Ma	Su	Sp	En	D
5.	11.25 - 12.10	Ma	Su	Eth/-	Ma	En
6.	12.15 - 13.00	Sp	Wk		Ku	



Klasse 3c

Std.	Uhrzeit	Montag	Dienstag	Mittwoch	Donnerstag	Freitag
------	---------	--------	----------	----------	------------	---------

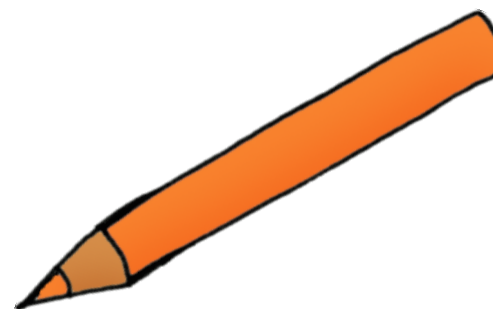
1.	7.45 - 8.30	Fa	Su	Ma	D	Ma
2.	8.30 - 9.15	PC	Su	Fa	Eth/Reli	D
3.	9.45 - 10.30	D	Ma	D	Ma	En
4.	10.30 - 11.15	D	Mu	D	D	Ku
5.	11.25 - 12.10	Ma	En		Sp	Wk
6.	12.15 - 13.00	Sp			Sp	



Klasse 3/1c

Std.	Uhrzeit	Montag	Dienstag	Mittwoch	Donnerstag	Freitag
------	---------	--------	----------	----------	------------	---------

1.	7.45 - 8.30	D	D	Wk	Ku	Fa
2.	8.30 - 9.15	D	D	D	Sp	Fa
3.	9.45 - 10.30	Fa	Fa	En	Ma	Su
4.	10.30 - 11.15	Eth/Fa	Ma	Ma	Reli/Fa	Su
5.	11.25 - 12.10	Fa	Sp	Fa	Fa	Ma
6.	12.15 - 13.00	PC	Sp	D	D	Mu



Klasse 3/1d

Std.	Uhrzeit	Montag	Dienstag	Mittwoch	Donnerstag	Freitag
------	---------	--------	----------	----------	------------	---------

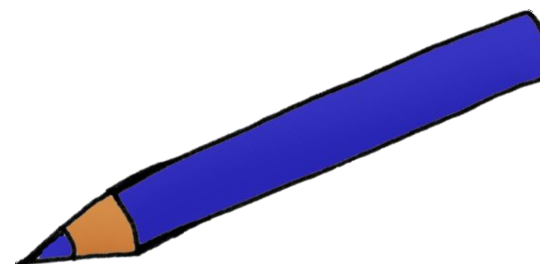
1.	7.45 - 8.30	Fa	Wk	D	Ku	D
2.	8.30 - 9.15	Fa	Fa	Fa	Sp	D
3.	9.45 - 10.30	D	D	En	Ma	Su
4.	10.30 - 11.15	Eth /Fa	Ma	Ma	Reli/Fa	SU
5.	11.25 - 12.10	D	Sp	Fa	Fa	Ma
6.	12.15 - 13.00	D	Sp	Fa	PC	Mu



Klasse 3/2c

Std.	Uhrzeit	Montag	Dienstag	Mittwoch	Donnerstag	Freitag
------	---------	--------	----------	----------	------------	---------

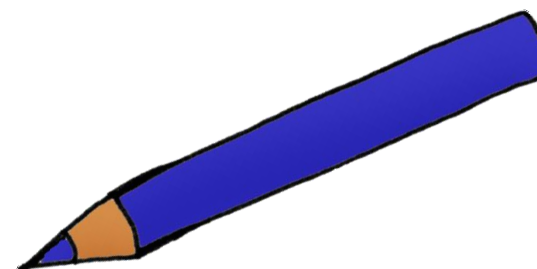
1.	7.45 - 8.30	D	Sp	Ma	Sp	Ku
2.	8.30 - 9.15	D	Sp	Ma	D	En
3.	9.45 - 10.30	Su	D	Fa	Ma	Wk
4.	10.30 - 11.15	Mu	D	Fa	Fa/Eth	D
5.	11.25 - 12.10	PC	Ma	D	Fa	Fa
6.	12.15 - 13.00	En	Fa	Su	Ma	



Klasse 3/2d

Std.	Uhrzeit	Montag	Dienstag	Mittwoch	Donnerstag	Freitag
------	---------	--------	----------	----------	------------	---------

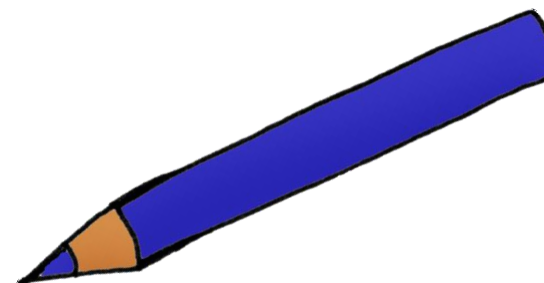
1.	7.45 - 8.30	Fa	Sp	Fa	Sp	Ku
2.	8.30 - 9.15	Ma	Sp	Ma	Fa	En
3.	9.45 - 10.30	D	Su	D	Fa	D
4.	10.30 - 11.15	Mu	Su	Fa	Fa/Eth	Wk
5.	11.25 - 12.10	D	Ma	PC	D	D
6.	12.15 - 13.00	En	Ma	D	Fa	



Klasse 4a

Std.	Uhrzeit	Montag	Dienstag	Mittwoch	Donnerstag	Freitag
------	---------	--------	----------	----------	------------	---------

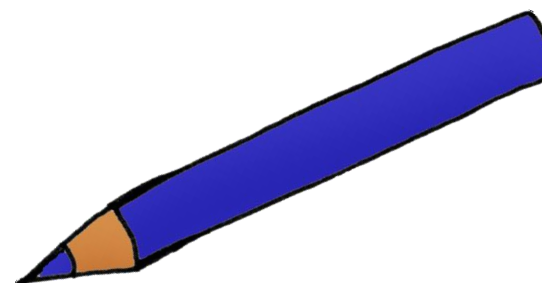
1.	7.45 - 8.30	Sp	Fa	Eth	Su	-
2.	8.30 - 9.15	Sp	PC	En	Su	-
3.	9.45 - 10.30	Fa	Mu	Su	Ma	Wk
4.	10.30 - 11.15	Mu	Fa	Ma	Ma	En
5.	11.25 - 12.10	D	D	D	Fa/Reli	Ma
6.	12.15 - 13.00	Ma	Ku	D	D	D



Klasse 4b

Std.	Uhrzeit	Montag	Dienstag	Mittwoch	Donnerstag	Freitag
------	---------	--------	----------	----------	------------	---------

1.	7.45 - 8.30	D	Eth/-	D	-	Ma
2.	8.30 - 9.15	D	D	Ma	D	D
3.	9.45 - 10.30	Ma	Fa	Su	Ma	Fa
4.	10.30 - 11.15	Pc	Ma	Su	Su	Ku
5.	11.25 - 12.10	Mu	Fa	Fa	Reli/Fa	Sp
6.	12.15 - 13.00	Wk	En	Mu	En	Sp



Klasse 4c

Std.	Uhrzeit	Montag	Dienstag	Mittwoch	Donnerstag	Freitag
1.	7.45 - 8.30	D	Ku	D	Ma	-

2.	8.30 - 9.15	D	Fa	Sp	Ma	Mu
3.	9.45 - 10.30	En	D	Ma	En	Sp
4.	10.30 - 11.15	Ma	D	Ma	Mu	D
5.	11.25 - 12.10		Pc	Fa	Reli/Eth	Su
6.	12.15 - 13.00		Su		Wk	Su

