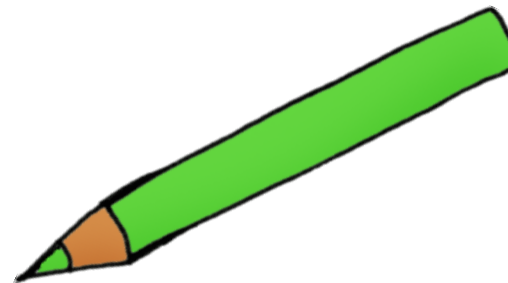


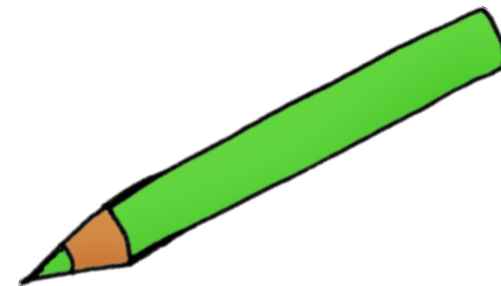
## Klasse 1a

Std.	Uhrzeit	Montag	Dienstag	Mittwoch	Donnerstag	Freitag
1.	7.45 - 8.30	D	D	D	Mu	Ma
2.	8.30 - 9.15	Eth./Rel.	D	Ma	Ma	Sp
3.	9.45 - 10.30	D	Sp	FA	Ma	D
4.	10.30 - 11.15	Su	Sp	We	Su	D
5.	11.25 - 12.10	Ma		Ku		TT
6.	12.15 - 13.00					



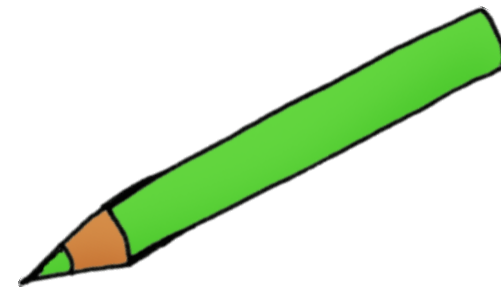
## Klasse 1b

Std.	Uhrzeit	Montag	Dienstag	Mittwoch	Donnerstag	Freitag
1.	7.45 - 8.30	D	D	D	Ma	D
2.	8.30 - 9.15	Ma	Ma	D	Mu	Ma
3.	9.45 - 10.30	Sp	Ma	Ku	D	Sp
4.	10.30 - 11.15	Su	Eth.	FA	D	Sp
5.	11.25 - 12.10	Su			We	TT
6.	12.15 - 13.00					



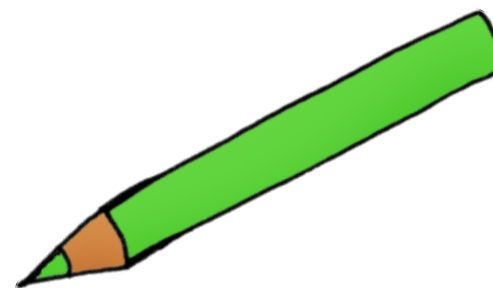
## Klasse 2a

Std.	Uhrzeit	Montag	Dienstag	Mittwoch	Donnerstag	Freitag
1.	7.45 - 8.30	D	Ma	Sp	Ma	D
2.	8.30 - 9.15	D	Ma	Sp	D	We
3.	9.45 - 10.30	Eth./Rel.	D	Ma	Schw.	Ma
4.	10.30 - 11.15	Mu	D	Su	Schw.	Su
5.	11.25 - 12.10	Ku		Su		D
6.	12.15 - 13.00					



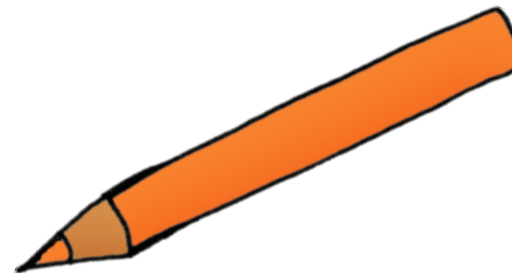
## Klasse 2b

Std.	Uhrzeit	Montag	Dienstag	Mittwoch	Donnerstag	Freitag
1.	7.45 - 8.30	D	D	Ma	D	D
2.	8.30 - 9.15	D	We	D	Eth./FA	D
3.	9.45 - 10.30	Reli/Fa	Ma	Sp	FA	Ma
4.	10.30 - 11.15	Ma	Su	Sp	Schw.	Ma
5.	11.25 - 12.10	Su		Mu	Schw.	Ku
6.	12.15 - 13.00	Su				



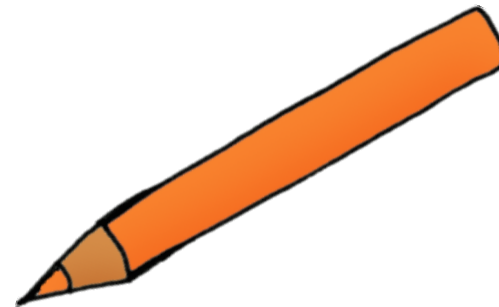
## Klasse 3a

Std.	Uhrzeit	Montag	Dienstag	Mittwoch	Donnerstag	Freitag
1.	7.45 - 8.30	D	D	Engl.	Ma	FA-PC
2.	8.30 - 9.15	FA	D	Ma	Ma	D
3.	9.45 - 10.30	We	D	D	Su	Ku
4.	10.30 - 11.15	Eth./Rel.	Ma	D	Su	FA
5.	11.25 - 12.10	Ma	Sp		Sp	
6.	12.15 - 13.00	Engl.	Sp		Mu	



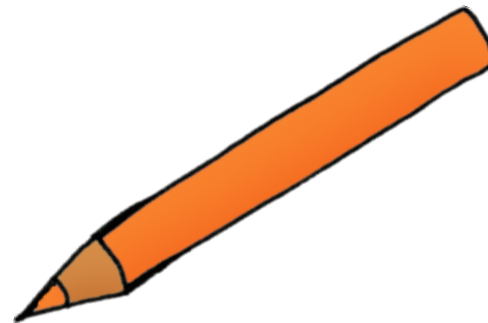
## Klasse 3b

Std.	Uhrzeit	Montag	Dienstag	Mittwoch	Donnerstag	Freitag
1.	7.45 - 8.30	D	D	D	D	D
2.	8.30 - 9.15	D	Mu	Engl.	Ma	D
3.	9.45 - 10.30	Ma	FA	Su	Sp	Ma
4.	10.30 - 11.15	Eth./Rel.	Ku	Ma	Sp	FA-PC
5.	11.25 - 12.10	Su		We	Engl.	Sp
6.	12.15 - 13.00	Ma			FA	



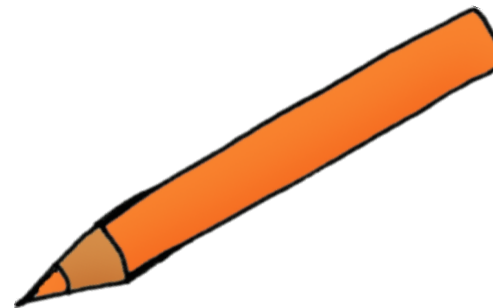
## Klasse 3/1c

Std.	Uhrzeit	Montag	Dienstag	Mittwoch	Donnerstag	Freitag
1.	7.45 - 8.30	Mu	SMU	SMU	SMU	SMU
2.	8.30 - 9.15	D	D	FA-Ma	D	FA-PC
3.	9.45 - 10.30	Eth./Rel.	D	Ma	Ma	Su
4.	10.30 - 11.15	D	Ku	D	Ma	Su
5.	11.25 - 12.10	Engl.	D / SMU	Sp	SMU	
6.	12.15 - 13.00	Sp	Ma	Sp	We	



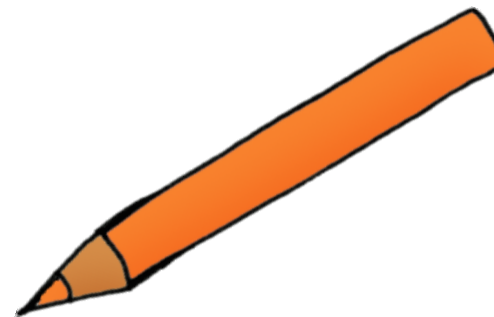
## Klasse 3/1d

Std.	Uhrzeit	Montag	Dienstag	Mittwoch	Donnerstag	Freitag
1.	7.45 - 8.30	Mu	SMU	SMU	Ma	SMU
2.	8.30 - 9.15	FA-PC	D	D	Ma	D
3.	9.45 - 10.30	Eth./Rel.	D	FA-Ma	D	D
4.	10.30 - 11.15	Ma	Ku	D	SMU	We
5.	11.25 - 12.10	Engl.	Ma	Sp	Su	
6.	12.15 - 13.00	Sp	SMU	Sp	Su / SMU	



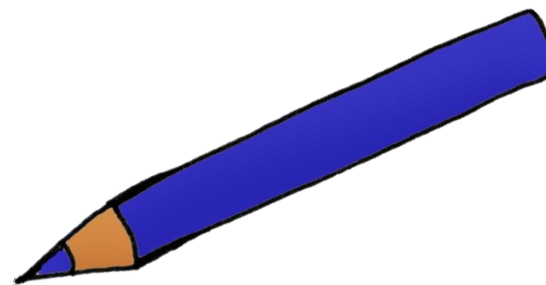
## Klasse 3/2c

Std.	Uhrzeit	Montag	Dienstag	Mittwoch	Donnerstag	Freitag
1.	7.45 - 8.30	D	Engl.	Su	SMU	D / SMU
2.	8.30 - 9.15	SMU	D	Su	Ma	D
3.	9.45 - 10.30	Ma	D	D	FA-D	We
4.	10.30 - 11.15	Sp	Mu	Engl.	D	Ku
5.	11.25 - 12.10	Sp	Ma	FA-Ma	Ma	SMU
6.	12.15 - 13.00	Eth./Rel.			Sp	FA-PC



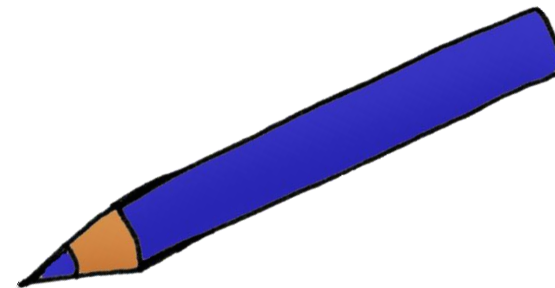
## Klasse 3/2d

Std.	Uhrzeit	Montag	Dienstag	Mittwoch	Donnerstag	Freitag
1.	7.45 - 8.30	FA-D	Engl.	SMU	SMU	Ma
2.	8.30 - 9.15	SMU	Ma	Su	D	We
3.	9.45 - 10.30	D	Ma	Su	Ma	Ku
4.	10.30 - 11.15	Sp	Mu	Engl.	FA-Ma	D
5.	11.25 - 12.10	Sp	D	D	D	FA-PC
6.	12.15 - 13.00	Eth./Rel.	D	SMU	Sp	



## Klasse 4a

Std.	Uhrzeit	Montag	Dienstag	Mittwoch	Donnerstag	Freitag
1.	7.45 - 8.30	D	D	D	Sp	D
2.	8.30 - 9.15	D	D	We	Sp	FA
3.	9.45 - 10.30	Ma	Ku	Ma	D	Engl.
4.	10.30 - 11.15	Ma	Engl.	Ma	Su	Su
5.	11.25 - 12.10	Rel./FA	PC	Eth.	Ma	Su
6.	12.15 - 13.00				Mu	



## Klasse 4b

Std.	Uhrzeit	Montag	Dienstag	Mittwoch	Donnerstag	Freitag
1.	7.45 - 8.30	Sp	Ma	D	Engl.	Ma
2.	8.30 - 9.15	Sp	D	D	Ma	Mu
3.	9.45 - 10.30	Su	Engl.	Ma	Su	PC
4.	10.30 - 11.15	D	FA	Ma	Su	We
5.	11.25 - 12.10	Rel.	Ku	D	D	
6.	12.15 - 13.00			Eth.	D	

